



GREYBRIDGE
— ENGINEERING CONSULTANTS —

COMPANY PROFILE

**ENGINEERING TRUST
DELIVERING VALUE**

DELIVERING INNOVATIVE, SUSTAINABLE,
AND HIGH-QUALITY CONSTRUCTION
SOLUTIONS THROUGH EXPERTISE,
INTEGRITY, AND COMMITMENT.

GREYBRIDGE

PROFESSIONAL PROFILE

A seasoned Construction Professional with 16 years of experience in Project Management Consultancy, having successfully served both Contractor and Consultant organizations across diverse construction sectors.



THIRUVADI S

CO-FOUNDER & PRINCIPAL CONSULTANT

-  14 years of Gulf experience in Dubai, Saudi Arabia, Oman & Qatar
- 2 years in Coimbatore, Tamil Nadu, India

HEALTH, SAFETY & ENVIRONMENT (HSE)



- Successfully completed HSE training programs.
- Actively participated in HSE awareness initiatives and safety compliance activities across multiple projects.

QUALITY MANAGEMENT & QUALITY CONTROL



- Expertise in developing and implementing comprehensive Quality Management Systems.
- Designed complete sets of Quality Control documents, including:
 - Inspection & Test Plans (ITP)
 - Inspection Checklists
 - Quality Procedures and Documentation Systems

PROCUREMENT MANAGEMENT



- Developed and implemented procurement policies and procedures.
- Designed procurement documentation frameworks to ensure transparent and efficient procurement processes.

PROJECT PLANNING & PRODUCTION MANAGEMENT



- Specialized in developing Master Schedules and Micro-Level Planning Schedules.
- Managed end-to-end project execution and day-to-day site operations.
- Prepared and monitored Daily, Weekly and Monthly Progress Reports to ensure timely project delivery.

QUANTITY SURVEYING & CONTRACT ADMINISTRATION



- Developed project specifications in compliance with local standards and building codes.
- Proficient in end-to-end Quantity Surveying activities.
- Managed Interim Payment Certifications (IPC), measurement verification and commercial documentation.

CONTRACTOR & VENDOR MANAGEMENT



- Conducted comprehensive evaluations of contractors and vendors based on:

-> Technical qualifications	-> Quality performance
-> Rate analysis	-> Project portfolio
-> Financial capability	-> Delivery commitments

EXPERIENCE DETAILS PROJECTS & SECTORS



OIL & GAS PROJECTS – QATAR

- Barzan Onshore Gas Development Project
- Dolphin Energy Project



METHANOL & LPG PROJECTS – OMAN

- OQ Methanol Plant
- LPG Production & Storage Facility
- Orpic Jetty Project – Port of Salalah



INDUSTRIAL & COMMERCIAL DEVELOPMENTS – OMAN

- Omani Paper Packaging Company
- STS Group Development – Office Building, Warehouse Facilities & Staff Accommodation Complex



HIGH-RISE DEVELOPMENTS – SAUDI ARABIA

- King Abdullah Financial District (KAFD) – Riyadh
- Ministry of Interior & Civil Defence Buildings – Riyadh

Residential Projects

- Residential Development – Point Pump Group, Kalapatti
- Residential Development – SKL Group, Tiruppur

Healthcare Projects

- CMC Hospital Campus, Chittoor
- Vedhanayagam Hospital Expansion (Brownfield Project), Coimbatore

Industrial Projects

- Industrial Facility Development – OM Mills Group, Erode

INTERNATIONAL PROJECT PORTFOLIO

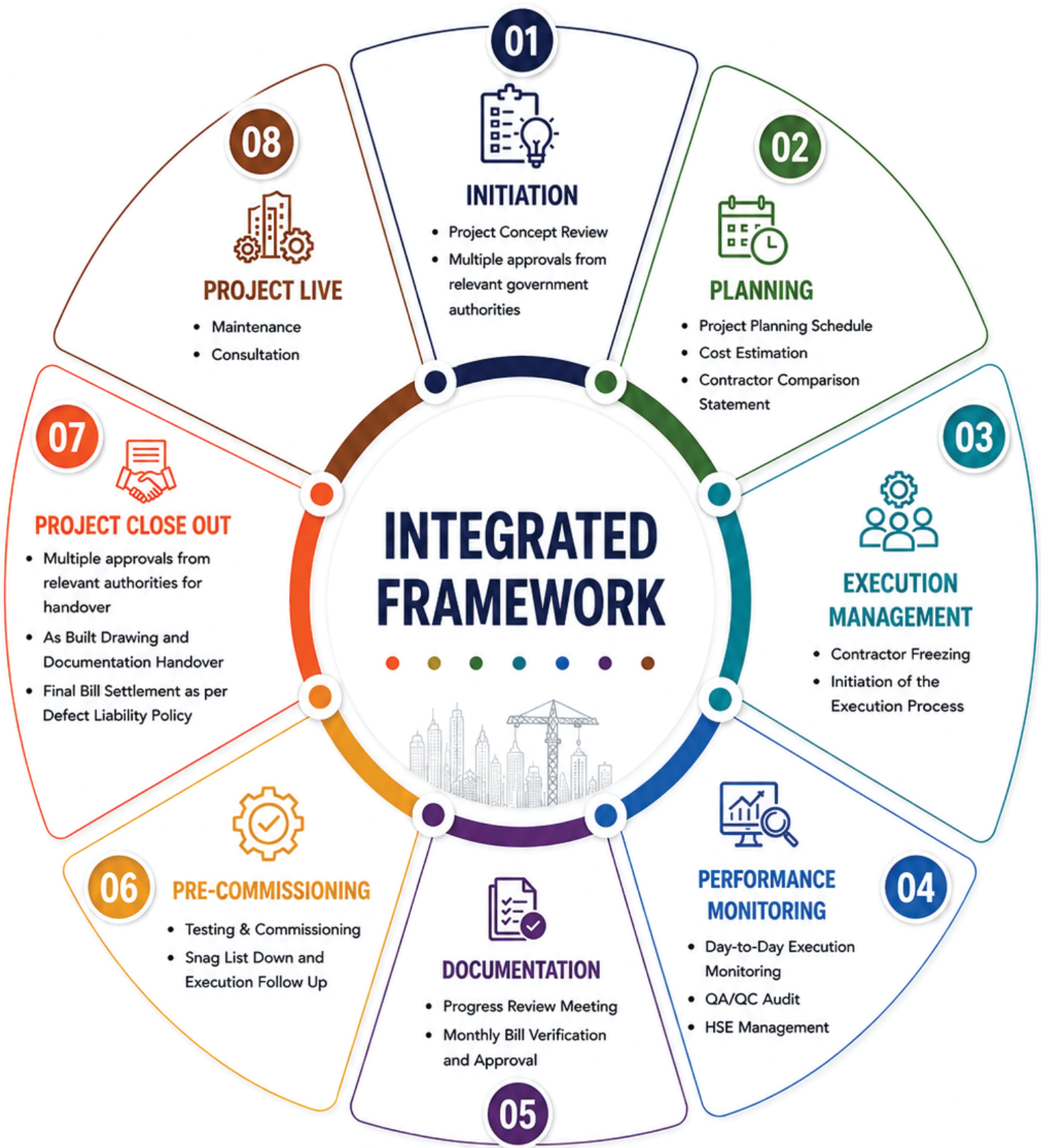
Our experience spans multiple sectors and geographies, including:

- ◆ Oil & Gas Projects
- ◆ Petrochemical & Process Plants
- ◆ Industrial Facilities
- ◆ Commercial Developments
- ◆ Healthcare Infrastructure
- ◆ High-Rise Towers
- ◆ Luxury Residential Projects
- ◆ Warehousing & Logistics Facilities
- ◆ Institutional Buildings

COUNTRIES SERVED



OUR PROJECT EXCELLENCE JOURNEY



INDUSTRIES WE SERVE



ABOUT GREYBRIDGE

Greybridge is a leading professional services firm specializing End to End Consultation in Construction Project Management. Taking as an ownership and handling the project by implementing core construction theory into the ground.



STRATEGIC INTENT

Our goal is to establish ourselves as a reliable leader for our clients by providing innovative, sustainable and high-quality solutions through our detailed focus and management system action plans that will influence the future of infrastructure.



PURPOSE STATEMENT

To systematically deliver the projects from concept to completion through a structured approach encompassing feasibility assessment, detailed planning, coordination, management till project closeout. We ensure timely delivery, cost efficiency, quality assurance and safety compliance while maintaining transparency, effective stakeholder communication and continuous performance monitoring throughout the project lifecycle.



WE SERVES

- ◆ Residential
- ◆ Commercial Buildings
- ◆ Energy Sector
- ◆ Industrial Projects
- ◆ Institutional Projects
- ◆ Infrastructure Development

PROJECT PLANNING & FEASIBILITY

- ◆ **Feasibility Studies:** Project feasibility study is a comprehensive assessment conducted before a project begins to determine if it is viable, practical and worth the investment. It analyzes technical, economic, legal and operational factors to identify potential risks, costs and benefits.
- ◆ **Cost Estimation:** Comprises the systematic forecasting of the financial resources required to execute a defined project scope. Concurrently, budgeting aggregates these discrete cost elements against a timeline to establish an approved cost baseline, serving as the formal mechanism for expenditure authorization and performance measurement.
- ◆ **Project Scheduling:** The process of mapping out a project by listing activities, deliverables and milestones, along with planned start/finish dates and assigned resources. It transforms the project scope into a working roadmap, tracking progress and ensuring tasks are completed within deadline.

DESIGN MANAGEMENT

- ◆ **Coordination with Architects / Design Consultants:** Early and regular communication between architects, consultants and clients to align on goals and resolve potential conflicts during design developments/revisions/GFC/as build drawings & details.
- ◆ **Design Review and Optimization:** This process involves a systematic, multidisciplinary evaluation of a design to verify it meets project requirements, regulatory standards and safety objectives, while applying mathematical modeling to improve efficiency, reduce material consumption and lower costs.
- ◆ **Value Engineering :** It's a systematic, function-oriented method to improve the value of a project, product, or service by optimizing the balance between performance and cost. It analyzes essential functions to identify and eliminate unnecessary costs while maintaining or enhancing quality, reliability and performance.

PROCUREMENT MANAGEMENT

◆ **Tender Documentation:**

A comprehensive procurement process to identify material requirements, quality standards, technical specifications, origin verification and warranty assessments as per tender requirements.

◆ **Vendor Evaluation:**

A structured process for assessing and monitoring supplier performance based on quality, cost, reliability and compliance. It helps reduce risks and supports informed procurement decisions.

◆ **Contract Management:**

Management of contracts from creation to completion, ensuring all parties fulfill obligations, maintain compliance and minimize project risks through effective monitoring and negotiation.

PROJECT MONITORING & CONTROL

◆ **Site Monitoring & Progress Tracking:**

Continuous monitoring of site activities to track progress against schedules, budgets and quality standards while identifying delays and bottlenecks.

◆ **Quality Check (QA/QC):**

Implementation of Quality Assurance (QA) and Quality Control (QC) procedures to ensure construction works meet specified standards, requirements and client expectations.

◆ **HSE Management:**

Health, Safety and Environment (HSE) management focused on workplace safety, regulatory compliance, risk mitigation, employee awareness and continuous safety performance improvement.

◆ **Risk Management:**

Proactive identification, analysis and mitigation of project risks to improve project performance and ensure successful delivery.

◆ **Reporting & Documentation:**

Preparation and maintenance of daily, weekly and monthly reports, ensuring proper documentation, performance tracking and project record management.

◆ **Cost Management:**

Budget planning, expenditure tracking and cost control to maintain financial discipline and prevent project overruns.

◆ **Timeline Management:**

Monitoring project schedules, milestones and dependencies to ensure timely completion and early identification of potential delays.

DOCUMENTATION WE HANDLE



Approval / Legal Documents - Documentary the construction legal documents like government approval documents, architectural drawings, structural drawings, MEP drawings and details from concept to handover phase including revisions. Handling the documents like contractor agreement, comparative statements, cash flow and other technical documents.



Method of Statement - Document detailing how a specific task will be executed safely and efficiently, serving as a safety map for workers. It outlines the sequence of operations, required resources, risk controls and health and safety procedures, typically submitted for approval before starting.



Inspection Test Plan (ITP)- An Inspection and Test Plan (ITP) is a structured, approved document outlining quality control activities for specific construction work, detailing what, how, when and who will inspect, along with acceptance criteria. It ensures compliance with design specs, codes and standards, crucial for ensuring quality.



Inspection Check List- An inspection checklist (ICL) is a document containing the details required to inspect each and every subject represented by the contractor, the details checklist represents the subject status like approved, approved with comments, rejected, etc.



Request for Inspection (RFI)-RFI is document carrying out the inspection subject details, location along with supporting documents like drawing copy, method of statement for specified activity and those set of documents to be submitted the Architect/Design consultant for inspection call.



Contractor Pre-Qualification Checklist-It's a forum used to analyze the contracting company status like completed project, financial stability, workmanship details, equipment/machinery details. It helps us to freeze and award the projects.



Document Tracking Master - A document master tracker is a database used to quick track and review the necessary documents based on requirement.



Material Approval Sheet (MAS) - MAS is used to approve the pre and post procurement of the construction material as per BOQ. This document contains details of the materials, specification, MSDS, delivery assurance, warranty, test result of the materials, the approved MAS shall be used at site as a witnessed document for each & every material.



Minutes of Meeting (MOM) - MOM is used to record the discussion done at meeting point; those points shall be documented for further follow up till the points get closed. This document carries general & technical points.



Master Planning Schedule - This schedule plays a major role in construction industry, which helps us the read and aware on pre planning, project status, critical path, work break down structure, delay in duration, multiple task, positive and negative impacts.



Micro Planning Schedule - This micro schedule is used to prepare to divide the general task into micro level which help us to analysis the accurate timeline for completion, Planned vs Actual progress review, procurement pre planning.



Daily / Weekly / Monthly Progress Reports - Daily work progress report shall be prepared on daily basis to study and understand the site on going status, weekly progress shall be prepared every week and for review and for discussion it carries out the sum of daily progress. Monthly progress report shall be prepared at end of every month which carries cumulative of the weekly report. This systematic works effectively to complete the project in successful manner.ment pre planning.



Contractors Work Order - A contractor work order is a binding, written document that authorizes specific services, defining the scope, cost and timeline for a project. It acts as both an operational guide for crews and a contractual agreement that protects against disputes.



Running Bill Verification - RA bills shall be verified based upon submission of the contractor. This RA should carry all the supporting documents like Quantity sheets, Abstract bill, Cover letter, Inspection checklist, Quality test report. The submitted booklet shall be cross checked at site prior approval.



Comparative Statements - The comparative statement is a document prepared for deep analysis of the pricing, quality of the works, timeline, advance construction methodology, post live service. All these factors required to conclude and award the project to the contracting company.



Concrete Pour Card -A concrete pour card is a critical quality control document ensuring all pre-pour, during-pour and post-pour requirements are met and approved. It serves as a checklist and record for site engineers, structural engineers and contractors, covering reinforcement, formwork, grade and volume to ensure structural integrity.



Design Transmittal - A design transmittal is a formal, actionable document often referred to as a packing slip used to transfer design documents, specifications, or drawings between parties (e.g., from an architect to a contractor or a client to a designer). Its purpose is to track submissions, define the project scope and set clear expectations for review or approval.

OUT OF SCOPE



01

Project Execution

The construction execution activities shall not be provided from our end.



02

Yellow Hat Deployment (on daily/weekly/monthly basis)

Any kind of work force supply or maintaining the labors on daily/weekly/monthly basis shall not be provided, instead supplier companies shall be referred if client preferred.



03

Designing

Any kind of designing including shop drawings, corrections, additional requirements shall not be performed.



04

Aesthetical Advice / Change / Material Selection

Shall not be advised, confirmed, changed from our end.



PROJECT CLOSEOUT

Ensuring a smooth transition from project completion to client handover through quality verification, compliance checks and complete documentation.



Testing & Commissioning:

T&C is a systematic process that verifies all building systems from HVAC and fire safety to electrical and plumbing perform interactively according to the design intent, regulatory requirements and safety standards. It acts as a final "test drive" before handover, moving a project from static completion to operational functionality.



Final Inspections:

A final inspection is the ultimate check conducted by municipal building officials or specialized inspectors to ensure a project is safe, functional and compliant with approved plans before issuing a certificate of occupancy. This inspection occurs after all construction is finished, all prior inspection deficiencies are resolved and the site is ready for handover.



Handover Documentation:

A formal package transferring a completed project from the contractor to the owner, ensuring compliance, operational readiness and warranty activation. It includes as-built drawings, warranties, certificates (e.g., occupancy) and operation manuals, facilitating a smooth transition to maintenance.

INDUSTRIES WE SERVE



Residential &
Commercial
Buildings



Energy
Sector



Industrial
Projects



Institutional
Projects



Infrastructure
Development



GREYBRIDGE
— ENGINEERING CONSULTANTS —

KEY PROJECT EXPERIENCE

Delivering excellence across diverse sectors and geographies through our commitment to quality, safety and timely execution.

INDIA

Residential projects:

- Residential development for Propel MD at GV Residence, coimbatore.
- Residential development for Unique shell MD at Sungam, Coimbatore.

Commercial projects:

- Commercial building development for Wealth fortune group at singanallur, coimbatore.
- Commercial building development for Designpluz group at kalapatti, coimbatore

OMAN

- IV Formulation Plant, Nizwa.
- OQ Methanol Plant, Salalah.
- Octal SAOC FZC, Salalah.

SAUDI ARABIA

- Al Rashid Trading & Contracting Company, Riyadh.
- Predominant Qc consultant for Al Rashid trading and contracting company.

QATAR

- Descon Engineering LLC, Ras Laffan Industrial City.



STRATEGIC APPROACH

Solutions aligned with project goals.



QUALITY ASSURANCE

Committed to highest standards.



EXPERIENCED TEAM

Skilled professionals delivering results.



ON-TIME DELIVERY

Focused on timely execution.



GREYBRIDGE
— ENGINEERING CONSULTANTS —

THANK YOU

Engineering trust
Delivering value



+91-638 592 5461
+91-994 404 6060



projects@greybridges.com
greybridgesec@gmail.com

Headquarters:

Bharathi Park 4th Cross Rd, Saiba-
ba Colony, Coimbatore, Tamil
Nadu 641043.

+91 6385925461
+91 9944046060

Satellite office:

Qatar:

Office No: 3, Floor 7, Marina Twin
Tower, B Lusail City, Lusail, Qatar
+974 51440425

Satellite office:

Saudi Arabia:

11451, 1st floor, Ash Shaikh Mubarak
As Subah, As Sulimaniyah, Riyadh
12223, Saudi Arabia.
+966580500185

Satellite office:

Sultanate of Oman:

238W+WHW,
Salalah, Oman
+968 91610778

**Satellite office
address Dubai:**

S07, Al Warsan I,
Dubai, UAE
+971 56 873 9972